

ICC **INDOFINE Chemical Company, Inc.**

121 Stryker Lane, Bldg. 30, Suite 1 • Hillsborough, NJ 08844 • U.S.A.

Phone: (908) 359-6778 • FAX: (908) 359-1179

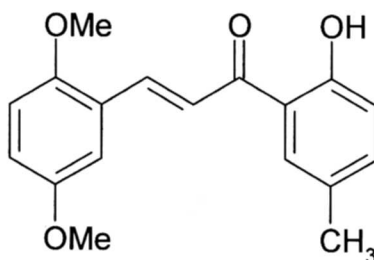
website: www.indofinechemical.com

e-mail: chemical@indofinechemical.com

CERTIFICATE OF ANALYSIS

Cat. No.: 19-814

<u>Product:</u>	2,5-DIMETHOXY-2'-HYDROXY-5'-METHYLCHALCONE
<u>Lot No.:</u>	0409249
<u>Molecular Formula:</u>	C ₁₈ H ₁₈ O ₄
<u>Molecular Weight:</u>	298.34
<u>Melting Point:</u>	101-103°C
<u>Appearance:</u>	Orange-yellow powder
<u>TLC;</u>	Hexane:Ethyl acetate (8:2)
<u>Solubility:</u>	Soluble in chloroform
<u>Purity (HPLC):</u>	99.05%





INDOFINE Chemical Company, Inc.

121 Stryker Lane, Bldg. 30, Suite 1 • Hillsborough, NJ 08844 • U.S.A.

Phone: (908) 359-6778 • FAX: (908) 359-1179

website: www.indofinechemical.com

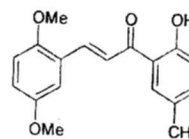
e-mail: chemical@indofinechemical.com

HPLC ANALYSIS

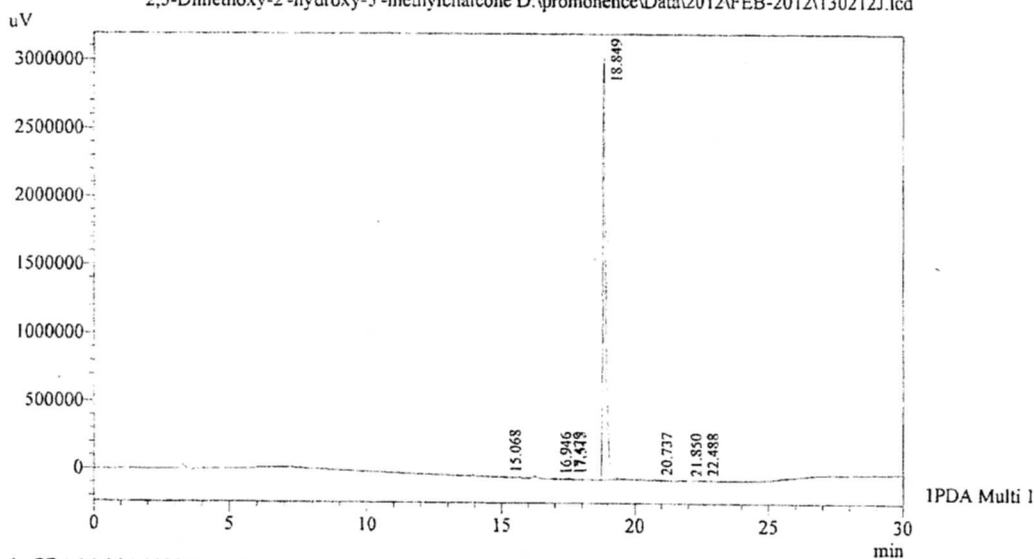
Acquired by : Sanjeev
Sample Name : 2,5-Dimethoxy-2'-hydroxy-5'-methylchalcone
Sample ID : Lot No:-0409249
Injection Volume : 20 uL
Data Filename : 130212J.lcd
Method Filename : Linear Gradient.M.lcm

Catalog No.: 19-814
Product name: 2,5-Dimethoxy-2'-hydroxy-5'-methylchalcone
Lot No.: 0409249

Date Acquired : 2/13/2012 4:18:49 PM
Date Processed : 2/13/2012 5:19:09 PM
Column : LUNA C-18(2), (250mm x4.6mm 5.0µ)
Flow : 1.000 mL/min.
Mobile Phase : A(0.05% TFA in water) B(Acetonitrile)
0.01 90 10
12.0 10 90
20.0 10 90
25.0 90 10
30.0 90 10



Chromatogram
2,5-Dimethoxy-2'-hydroxy-5'-methylchalcone D:\promonence\Data\2012\FEB-2012\130212J.lcd



I PDA Multi 1 / 220nm 4nm

PeakTable

Peak#	Name	Ret. Time	Area	Area %	Relative Retention Time
1	RT:15.068	15.068	20065	0.08	0.80
2	RT:16.946	16.946	8771	0.04	0.90
3	RT:17.429	17.429	8768	0.04	0.92
4	RT:17.515	17.515	59362	0.24	0.93
5	RT:18.849	18.849	24161638	99.05	1.00
6	RT:20.737	20.737	74238	0.30	1.10
7	RT:21.850	21.850	9499	0.04	1.16
8	RT:22.488	22.488	50152	0.21	1.19
Total			24392492	100.00	



INDOFINE Chemical Company, Inc.

121 Stryker Lane, Bldg. 30, Suite 1 • Hillsborough, NJ 08844 • U.S.A.

Phone: (908) 359-6778 • FAX: (908) 359-1179

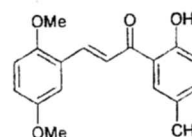
website: www.indofinechemical.com

e-mail: chemical@indofinechemical.com

Catalog No.: 19-814

Product name: 2,5-Dimethoxy-2'-hydroxy-5'-methylchalcone

Lot No.: 0409249

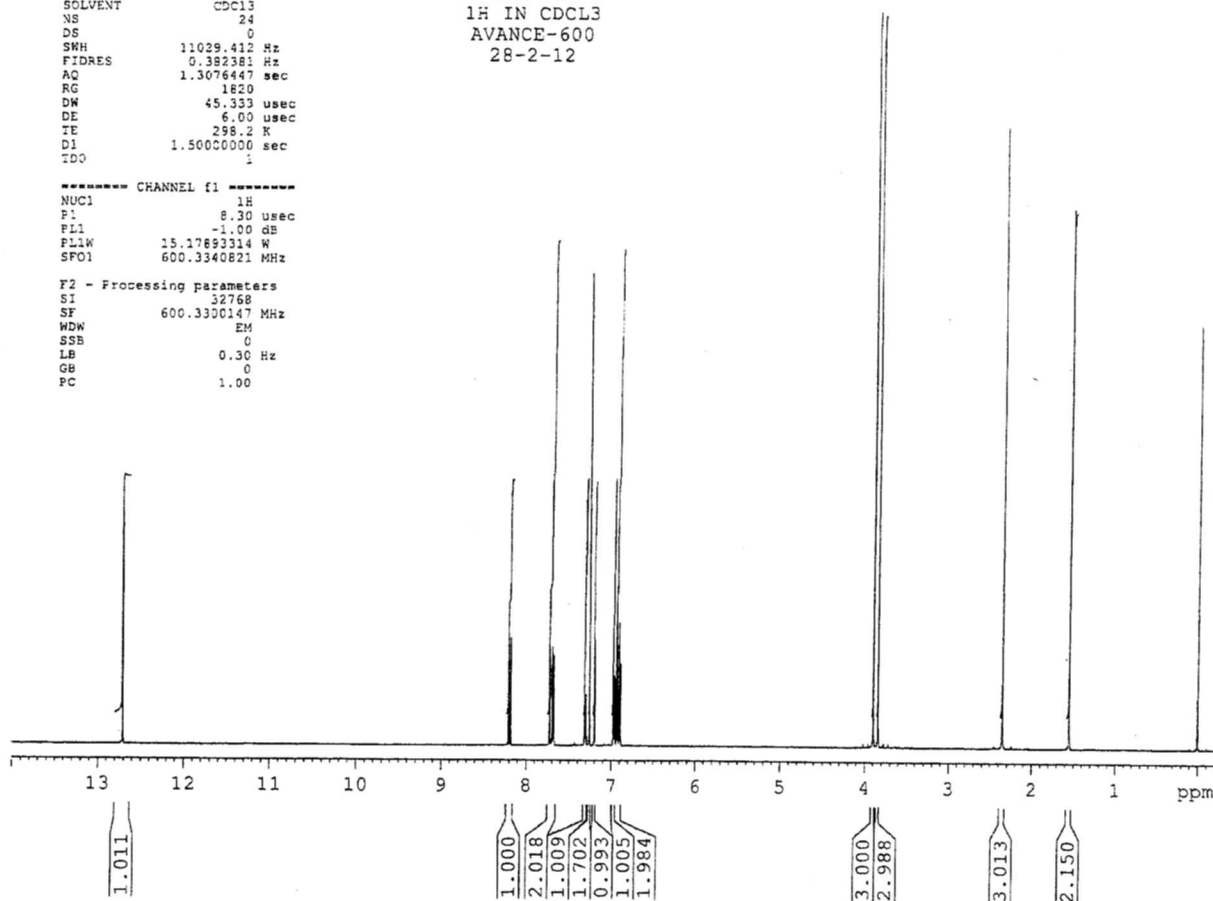


SOLVENT CDCl₃
NS 24
DS 0
SNH 11029.412 Hz
FIDRES 0.382381 Hz
AQ 1.3076447 sec
RG 1820
DW 45.333 usec
DE 6.00 usec
TE 298.2 K
D1 1.5000000 sec
TDO 1

ICC-17
1H IN CDCL₃
AVANCE-600
28-2-12

----- CHANNEL f1 -----
NUC1 1H
P1 8.30 usec
PL1 -1.00 dB
PL1W 15.17893314 W
SFO1 600.3300147 MHz

F2 - Processing parameters
SI 32768
SF 600.3300147 MHz
WDW EM
SSB 0
LB 0.30 Hz
GB 0
PC 1.00





INDOFINE Chemical Company, Inc.

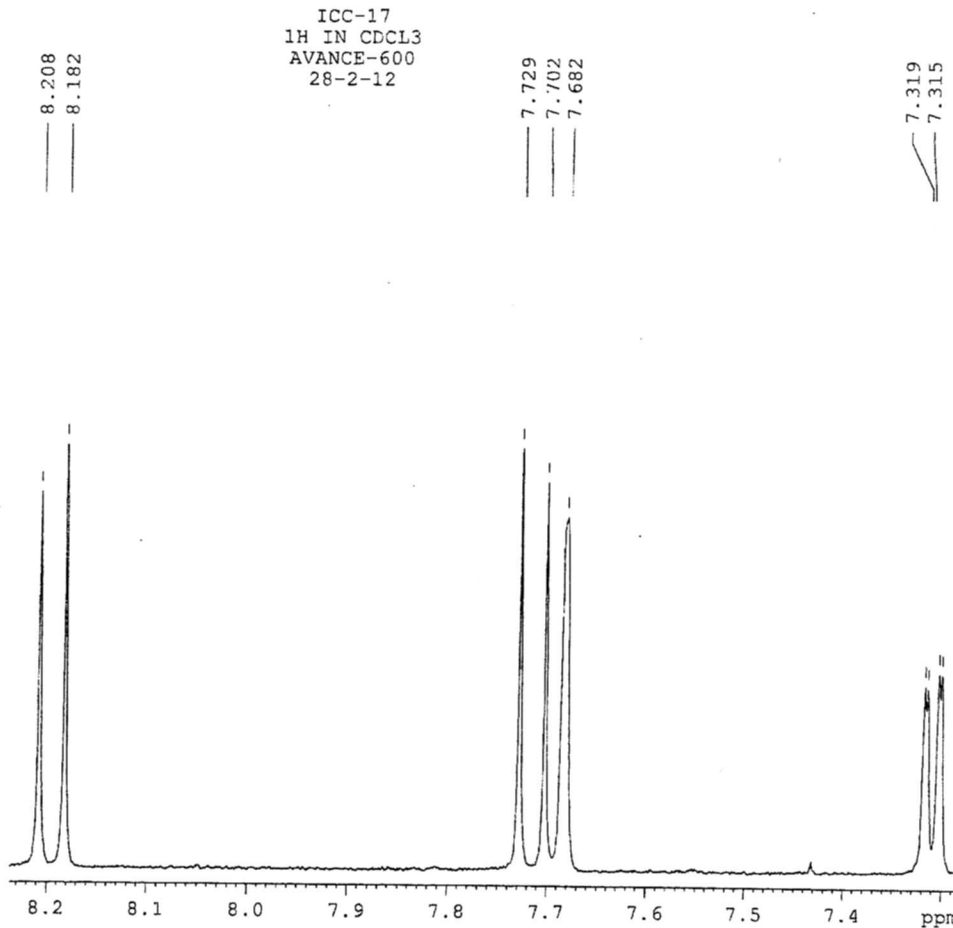
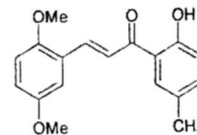
121 Stryker Lane, Bldg. 30, Suite 1 • Hillsborough, NJ 08844 • U.S.A.

Phone: (908) 359-6778 • FAX: (908) 359-1179

website: www.indofinechemical.com

e-mail: chemical@indofinechemical.com

Catalog No.: 19-814
Product name: 2,5-Dimethoxy-2'-hydroxy-5'-methylchalcone
Lot No.: 0409249



ICC INDOFINE Chemical Company, Inc.

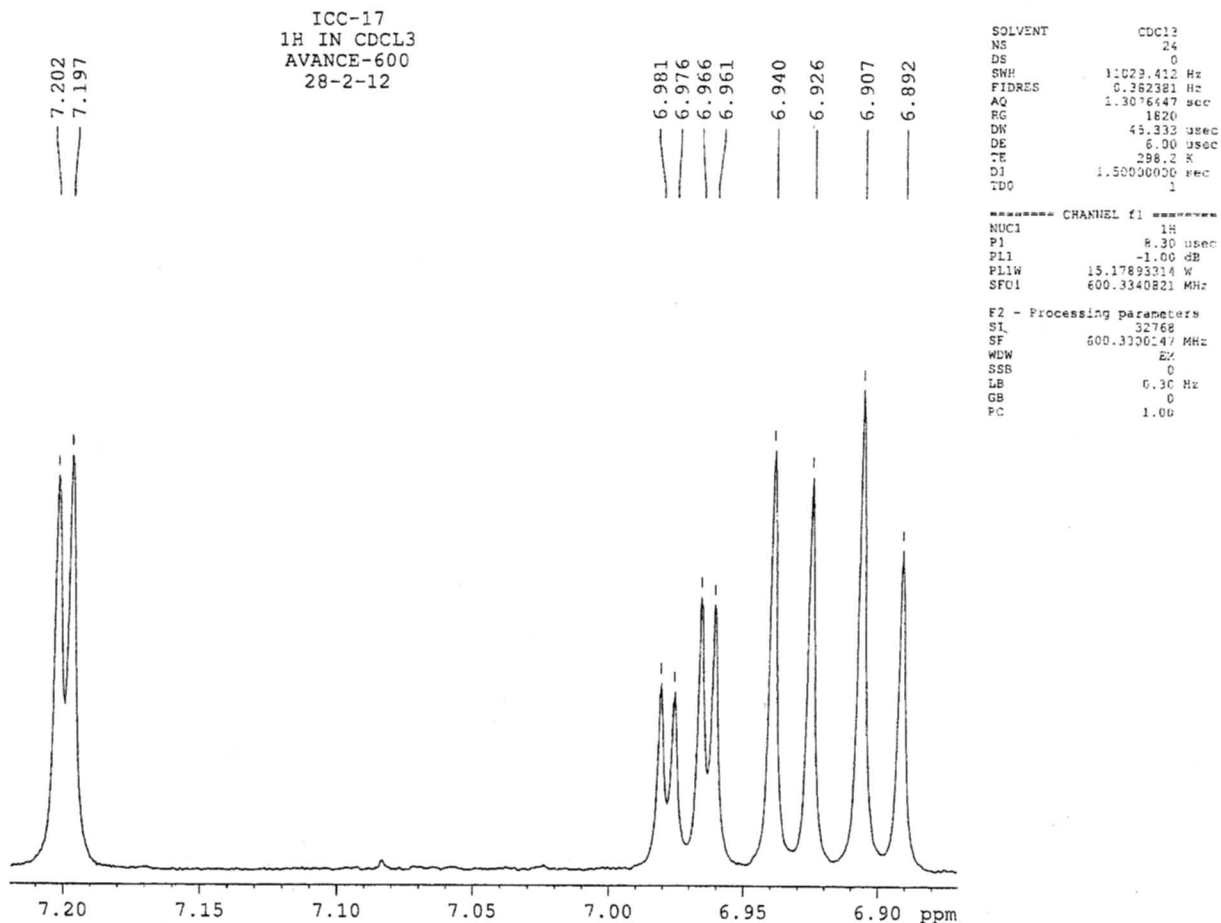
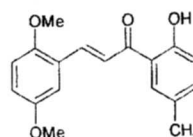
121 Stryker Lane, Bldg. 30, Suite 1 • Hillsborough, NJ 08844 • U.S.A.

Phone: (908) 359-6778 • FAX: (908) 359-1179

website: www.indofinechemical.com

e-mail: chemical@indofinechemical.com

Catalog No.: 19-814
Product name: 2,5-Dimethoxy-2'-hydroxy-5'-methylchalcone
Lot No.: 0409249





INDOFINE Chemical Company, Inc.

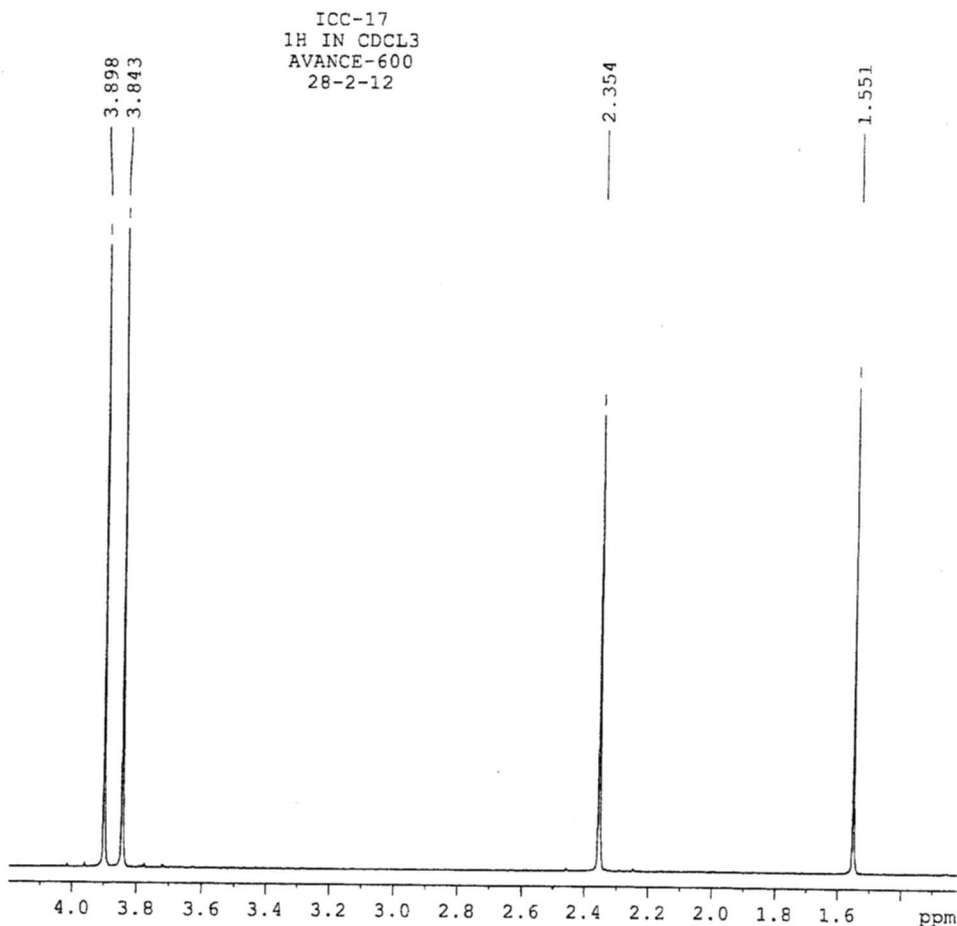
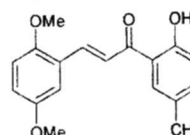
121 Stryker Lane, Bldg. 30, Suite 1 • Hillsborough, NJ 08844 • U.S.A.

Phone: (908) 359-6778 • FAX: (908) 359-1179

website: www.indofinechemical.com

e-mail: chemical@indofinechemical.com

Catalog No.: 19-814
Product name: 2,5-Dimethoxy-2'-hydroxy-5'-methylchalcone
Lot No.: 0409249



SOLVENT CDCL₃
NS 24
DS 0
SWH 11029.412 Hz
FIDRES 0.382381 Hz
AQ 1.3076447 sec
RG 1820
DW 45.333 usec
DE 6.00 usec
TE 298.2 K
D1 1.5000000 sec
TDO 1

----- CHANNEL f1 -----
NUC1 1H
P1 8.30 usec
PL1 -1.00 dB
PL1W 15.17893314 W
SF01 600.3340821 MHz

F2 - Processing parameters
SI 32768
SF 600.3330447 MHz
WVW EV
SSB 0
LB 0.30 Hz
GB C
FC 1.00